

THE POWER BEHIND A JOB DONE RIGHT.

SHIRE BUILDING 200 LEXINGTON, MA

OWNER: Shire Pharmaceuticals

PRIME CONTRACTOR: Lend Lease
Boston, MA

ELECTRICAL VALUE: \$10,000,000

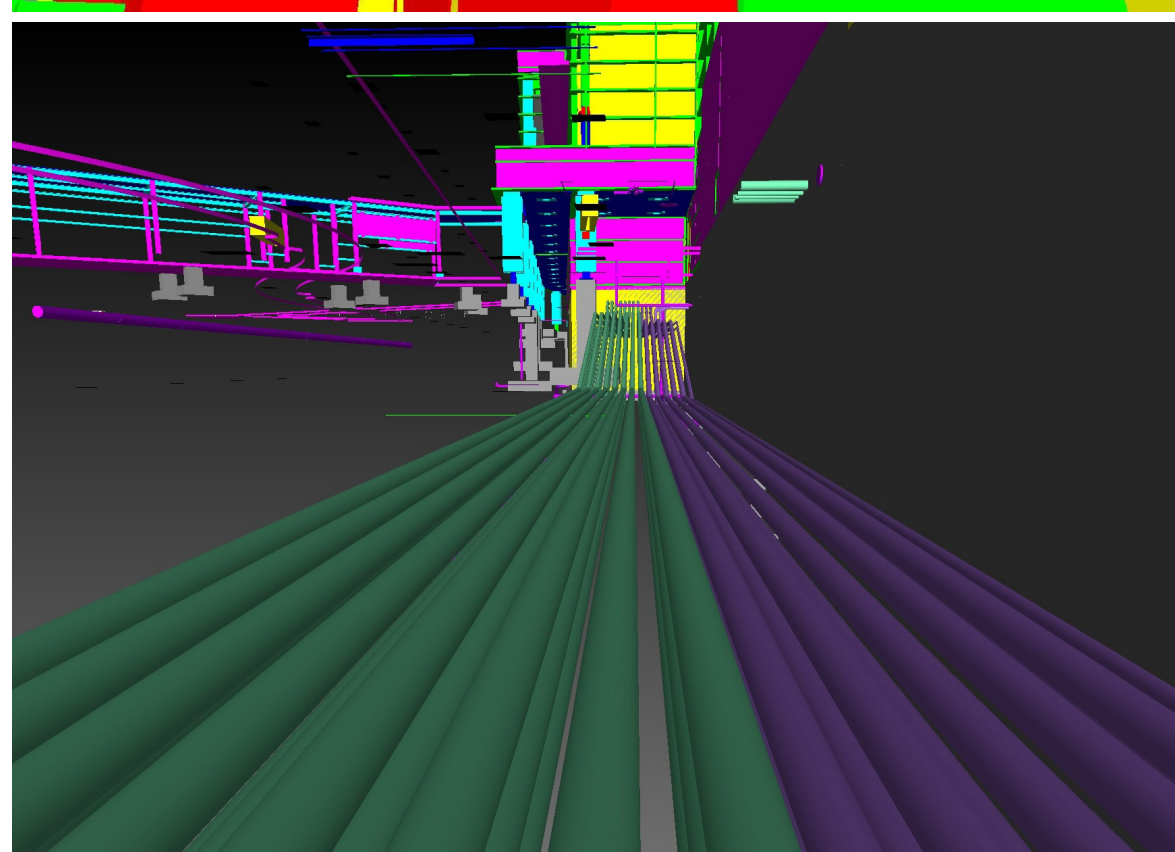
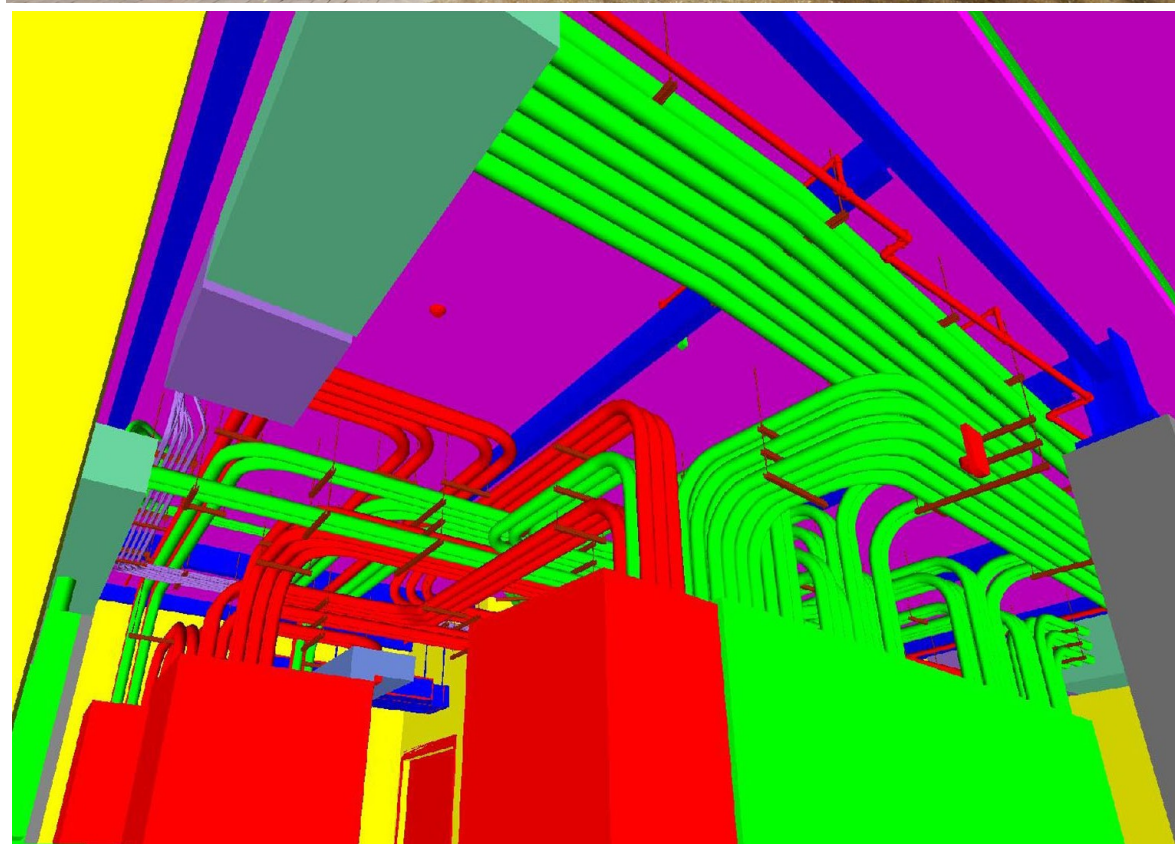
DESCRIPTION:



A LEED Gold Certified 188,000 square foot facility housing process development research labs and admin offices. Building Information Technology (BIM) virtual construction modeling tools were utilized by the design and field teams to complete the underground service, specified lighting package, Lutron control system, lightning protection, life-safety, UPS, sound masking, daylight harvesting and security systems.

PROJECT MANAGERS: **GREG WATERS**

PROJECT FOREMEN: **JOE FRUCI**
JOHN LYNCH



REILLY ELECTRICAL CONTRACTORS, INC.

RELECO LAB R&D PROJECTS